



Kimble Recycling & Disposal, Inc.
P.O. Box 448
Dover, OH 44622
Phone: (800) 201-0005
Fax: (330) 343-0411
www.kimblecompanies.com

THE VILLAGE OF
MOGADORE
135 S Cleveland Avenue
Mogadore, OH 44260

March 1, 2021

**RE: IMPORTANT NOTICE ON
REFUSE/RECYCLING SERVICE**

Dear Resident,

Following a competitive bid process, the Village of Mogadore awarded an exclusive contract, effective **April 1, 2021**, for all residential refuse and recycling collection to Kimble Recycling & Disposal, Inc. (Kimble). Kimble is a local family owned business with 68 years of experience in the refuse industry. (*Learn more about Kimble at kimblecompanies.com*).

In addition to a reputation for excellent service, Kimble will utilize trucks powered by natural gas which operate more quietly and efficiently. Natural Gas is a cleaner burning fuel (less emissions) which improves the environment of the Village's' neighborhoods. The natural gas is also generated here in Eastern Ohio, which helps the local economy and reduces dependency on foreign oil.

Please take time to read this information carefully, as it may answer many of the questions you may have regarding how to participate in the collection program provided by Kimble. The day and time of service of your collection may be different than in the past. Please have all your materials at the curb for collection by 6:00 A.M. on your collection day. If you do not have your carts or bags placed out timely for collection, you will have to wait until your next regularly scheduled pick up day for collection.

**EFFECTIVE APRIL 1, 2021 YOUR REGULAR
COLLECTION DAY WILL BE
TUESDAY**

Your first refuse collection day will be April 6, 2021.

Your first every other week recycle collection day will be April 13, 2021.

DELIVERY AND USE OF THE KIMBLE CARTS

Beginning Wednesday, March 24, 2021, Kimble will start delivering to each residence selecting the Regular Full Service, a 96-gallon (dark green) cart to contain your refuse and to all residents a 65-gallon (bright green) cart to contain your recyclable materials. Current customers of Kimble already using a Kimble refuse cart will continue to use their existing cart and will receive a 65-gallon (bright green) recycle cart. Delivery of these carts to each residence will take some time but should be completed by March 31, 2021.

RESIDENTS WHO ARE NOT CURRENTLY A KIMBLE CUSTOMER SHOULD NOT UTILIZE THE KIMBLE CARTS UNTIL AFTER YOUR LAST SERVICE DAY IN MARCH. YOUR CURRENT HAULER WILL NOT SERVICE KIMBLE CARTS. THESE RESIDENTS SHOULD CONTACT THEIR CURRENT REFUSE HAULER TO END SERVICES, REQUEST ANY NECESSARY REFUNDS, OR THE REMOVAL OF ANY SUPPLIED REFUSE CARTS.

If you do not receive your carts by March 31, 2021, please contact Customer Service by phone at 1-800-201-0005, live chat on our website at www.kimblecompanies.com or email at customerservice@kimblecompanies.com.

Extra Carts - Extra refuse carts are available for Regular Full Service customers for an additional cost of \$9.00 per month. Extra Recycling carts are available to all customers for an additional cost of \$4.00 per month. Please call Kimble Customer Service to request any extra carts. Extra carts not delivered with the initial carts will be charged a one-time \$15.00 delivery fee. The Kimble refuse and recycle carts are provided for your use at the above listed address.

To use the carts, simply place your household refuse into the dark green Kimble supplied refuse cart and place your loose (no need to bag) recyclable materials into the bright green Kimble supplied recycle cart. On your collection day, pull both your refuse and recycle carts within 2-3 feet of the street with the lid openings facing the street. The carts should be at least 3 feet from one another and other objects such as parked cars, mailboxes, trees, other refuse bags, or bulky refuse items. Though refuse service is provided weekly and recycle service is provided every other week, it is only necessary to place your carts to the curb when they are full.

KEY COMPONENTS OF THE REFUSE PROGRAM

Two Service Options Available:

Registering for Desired Service Level

All residents will automatically be registered for the Regular Full Service option. There is no need to contact Kimble unless you are selecting the Low Volume Bag Service. Residents selecting the Low Volume Service should contact Kimble by March 15th.

- **Regular Full Service with 96 Gallon Refuse Cart** – This service is available at a cost of \$16.24 per month/\$48.72 per quarter for weekly refuse service which includes the contents of your dark green 96-gallon refuse cart, excess bagged or bundled refuse, yard waste, and bulky items. Weekly excess refuse placed outside the Kimble supplied 96-gallon refuse cannot exceed 2 cubic yards. You will also receive one (1) 64-gallon Kimble recycling cart for recyclable materials. The excess bagged refuse and yard waste should be in 30-gallon bags and have enough strength to maintain their integrity when lifted from the top. Bagged or bundled refuse and yard waste not exceeding 4 feet in length should not weigh more than 50 pounds per bag or bundle. Cardboard boxes, 55-gallon drums, or barrels cannot be used as waste receptacles. Personal containers 30 gallons or less may be set out for manual collection. Kimble, nor the Village are responsible for any damages caused to personal containers that are larger than 30 gallons in size, which require Kimble drivers to use the automated collection arm to empty the container.
 - **Bulk Item Collection** – Included in the Regular Full Service with 96-gallon Refuse Cart, you may set out bulk items weekly, on any regularly scheduled collection day.
 - Bulk items include stoves, appliances, hot water heaters (water removed), washers, dryers, furniture, chairs and carpet (4 feet in length).
 - Appliances containing freon are not collected.

- All mattresses, box springs and upholstered furniture infested with bed bugs **MUST** be wrapped and sealed in plastic.
 - Christmas trees need to 4 feet or less in length to be collected.
 - Please keep bulk items three feet away from your carts.
- **Construction & Demolition Debris (C&D)** – If remodeling and repair work is performed by the resident, the C&D will be collected weekly. Individual items shall not weigh more than 50 lbs. Contractors performing remodeling and repair work are responsible for the removal of debris and the C&D materials. These items set out for collection will not be collected.
- **Low Volume Bag Service** – This service requires residents to use special marked “Kimble” bags purchased from Kimble for all refuse. You will also receive one (1) 64-gallon Kimble recycling cart for recyclable materials. The cost of this service is \$6.00 per month/\$18.00 per quarter plus the cost of the bags. Customers must pre-purchase the Kimble bags in packs of 10 at the cost of \$2.00 per bag/\$20.00 per packet. Solid waste not in Kimble marked bags will not be collected. Bag Service Customers will need to make arrangements with Kimble’s **in advance for pick up and payment** for the additional items, including yard waste and bulk items, Kimble will charge Bag Service Customers based on the item(s) collected at the price outlined on the **Low Volume Bulk or Extra Service Price List enclosed**. To inquire about the Low Volume Kimble Bag Service, call Kimble’s Customer Service at 1-800-201-0005 or e-mail at customerservice@kimblecompanies.com.

KEY COMPONENTS OF THE RECYCLE PROGRAM

64-gallon Recycle Cart – All levels of refuse service will include the every-other week collection of your 64-gallon recycle cart. Please refer to the enclosed Mogadore Recycling Collection Calendar for the every-other week recycling schedule. Cardboard, steel cans, aluminum cans, newspapers, office paper, junk mail, glass bottles, and plastic bottles (see Plastics Recycled below) can all be placed in the recycle cart. Recycle service will occur on the same day as refuse collection. Please do not use your recycle cart for refuse. Recycle carts containing refuse or recyclable items that are contaminated with food, liquids or other non-recyclable materials will not be emptied and will be tagged to notify the resident of improper use. Contaminating the recycle cart can damage other recyclables during the sorting process. As a result, we ask you to be conservative in your decision to recycle. When in doubt throw it out!

Plastics Recycled - Most plastic products are labeled on the bottom with a recycle symbol consisting of arrows that cycle clockwise to form a rounded triangle and enclosing the number 1 or 2. Any clean and empty plastic bottles or jugs labeled in this fashion can be included for recycling. **Plastic items not acceptable include plastic bags, shrink wrap, Styrofoam, toys, motor oil and antifreeze containers.** There is a tremendous amount of material which can be diverted from your refuse cart to your 64-gallon recycle cart. Recycling a ton of plastic saves the energy equivalent of 1,500 gallons of gasoline!

Single Stream Recycling – Do not bag or bundle your newspapers, cardboard, or any other materials separately. The bags and materials used to bundle your recyclables can become entangled in the recycling sorting equipment causing damage. They may also contaminate the contained recycling materials making them unrecoverable. All recyclable materials can be mixed together in the recycle cart as a “single stream” of recyclable material. The individual components of the mixed recyclables or “single stream” will be segregated and prepared for market at Kimble’s automated recycle facility. See the enclosed list of all the items which can be placed in the recycle cart to be recovered and returned to markets.

SLOW DOWN TO GET AROUND

If you are driving behind one of our collection vehicles, we ask for your patience and please remember that Ohio law requires you to slow down before passing any refuse hauling vehicle. The safety of our employees and the general public are a top priority for Kimble.

REFUSE AND RECYCLING COLLECTION GUIDELINES

Consistent with previous services, the weekly collection DOES NOT include tires, batteries, automotive/truck parts, paint, oil, fluorescent bulbs, gas cans, propane tanks, hazardous/infectious waste, flammable liquids, and any waste prohibited from disposal in a municipal solid waste landfill. Call the Solid Waste District (Reworks) for information on disposal of these items at 330-374-0383.

From time to time you may place items on the curb that Kimble cannot accept because they do not comply with these guidelines. Our drivers will place a tag on the item explaining why it cannot be collected.

Kimble does not operate on the following Holidays: New Year's Day, Memorial Day, July 4th, Labor Day, Thanksgiving Day, and Christmas Day. If a Holiday falls on a Monday or Tuesday, service for that week will be delayed by one day. If a holiday falls on a Wednesday thru Sunday, your collection day will not be delayed (collection day will remain Tuesday).

If you should have any further questions regarding service or select the Low Volume Service, please contact Customer Service by phone at 1-800-201-0005, live chat on the website at www.kimblecompanies.com or email at customerservice@kimblecompanies.com.

Kimble Recycling & Disposal, Inc. is pleased to add the Village of Mogadore residents to our family of customers.

Sincerely,

Your Kimble Service Team

PLEASE DO NOT BLOCK

With the automated collection trucks we need some room to reach the cart. Please do not park vehicles in front of the cart on collection day.



CART SHOULD OPEN TOWARDS THE STREET

Cart should not be placed at the curb sideways or backwards. The lid should open towards the street.

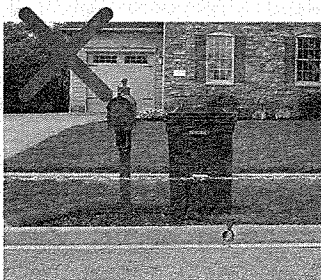


PLACEMENT OF CART

Each cart should have nothing sitting nearby... Mailboxes, telephone poles, trees, additional carts, etc. must be a minimum of 2-3 feet from the cart.



The best placement for a cart is at the end of the driveway or on the grass within 2-3 feet of the road.



LOADING YOUR CART

TRASH - Place items into trash bags to keep your trash cart clean.

RECYCLING - Place approved items in your recycling cart loosely (no bags). Breakdown boxes to save room.

LOW VOLUME PRODUCER BULK PICKUP CHARGE
The Village of Mogadore
Village Wide Waste and Recycle Collection Services

Description	Unit Price
Air Conditioner (Window) *	\$20.00
If Refrigerant is Not Removed	\$120.00
Bath Tub	\$25.00
Bulk Material (Per Container)	\$20.00
Bundled Yard Waste (brush per bundle)	\$5.00
Chair (upholstered, wrapped in plastic)	\$20.00
Chair (wooden)	\$5.00
Dishwasher	\$20.00
Dryer	\$20.00
Freezer *	\$25.00
If Refrigerant is Not Removed	\$120.00
Holiday Tree	\$5.00
Hot Water Tank	\$20.00
Incinerator	\$20.00
Loose Material (per bag or container) **	\$5.00
Mattress or Box Springs (wrapped in plastic)	\$20.00
Refrigerator *	\$25.00
If Refrigerant is Not Removed	\$120.00
Bagged Yard Waste	\$5.00
Shower/Tub Unit	\$20.00
Sink	\$20.00
Sofa (wrapped in plastic)	\$20.00
Stationary Tub	\$20.00
Stove/Oven	\$20.00
Swing Set (disassembled)	\$20.00
Table (end)	\$20.00
Table (kitchen)	\$20.00
Television	\$20.00
TV's that need 2 Workers	\$75.00
Toilet & Tank	\$20.00
Washer	\$20.00
Replacement of Lost/Stolen Cart	\$115.00
Rental of Extra Refuse Cart	\$ 108.00 annual + \$15 delivery
Rental of Extra Recycle Cart	\$ 48.00 annual + \$15 delivery

* Appliances must have refrigerant removed. If not removed it will be collected for \$120.00 ea.

** Loose material must be in a 33 gallon bag/container or less - weigh no more than 50 pounds

*** Large Televisions that need 2 workers to lift is \$75.00, also entertainment centers

PAPER & NEWSPAPER

Paper should be clean and dry. Please no glossy paper or foil wrapping paper. Paper should not be stained by waste. Magazines, mail, newspapers and copier paper are accepted..



CARDBOARD

Cardboard must be clean and dry. It should be flattened and be emptied of any packing materials. No food contamination such as grease on pizza boxes.



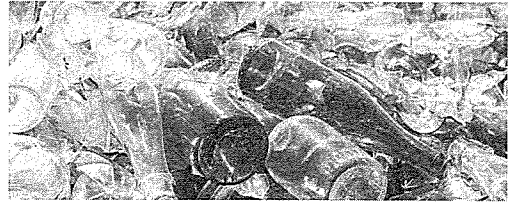
METAL AND ALUMINUM CANS

Only metal or aluminum food and drink cans are accepted. They should be empty, clean and dry before being placed loosely in the recycling cart. No other metal items are accepted.



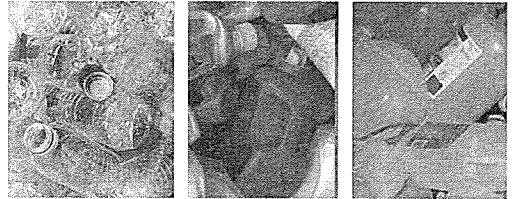
GLASS BOTTLES

All glass bottles should be empty, clean and dry before being placed loosely in the recycling cart. Please no glassware, mirrors, window panes or light bulbs.



PLASTICS JUGS & BOTTLES

Only clean and empty plastic bottles and jugs are accepted. Please do not crush the bottles and keep lids on. No other plastic items are accepted - even if they have a recycle logo.



NOT ACCEPTED

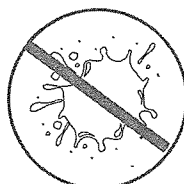
- WOOD
- PAINT CANS
- ANTI-FREEZE
- WAX CARTONS
- BATTERIES
- LIGHT BULBS
- MOTOR OIL CONTAINERS
- HOSES
- WIRE HANGERS
- PLASTIC BAGS
- STYROFOAM
- CHRISTMAS LIGHTS
- TOYS
- PLASTIC UTENSILS
- PLASTIC FURNITURE
- YARD WASTE



NO
PLASTIC BAGS



NO
GARBAGE



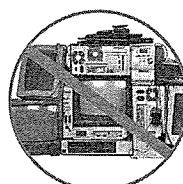
NO
FOOD OR LIQUIDS



NO
CLOTHING



NO
HOSES/WIRES/CHAINS

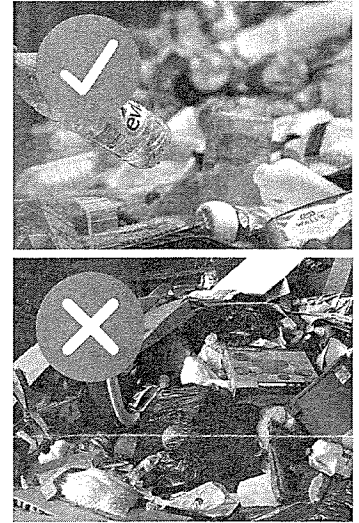


NO
ELECTRONICS

Since 1994, Kimble Recycling & Disposal, Inc. has provided convenient recycling service to our Eastern Ohio customers. Take a minute to learn about our easy recycling program and what we recycle.

The biggest issue with curbside recycling for all recycling haulers is the large amount of contaminates received within the recycling carts (see pictured). Items such as trash bags, food residue, styrofoam, batteries, electronics, etc. are among the top contaminates and are not accepted at our recycling center.

If your item is not on the approved list please place it directly into the trash. All items should be cleaned and dried before being placed into the cart - unbagged. Together, we can help protect the environment and build a more sustainable future.



RECYCLING RIGHT - In 3 Easy Steps...

- 1 When in doubt... THROW IT OUT!**
 Make sure that all items are on the Kimble Recycling Center's approved list of accepted recyclables. If the item is not on the list or if you are unsure place it directly into the trash.
- 2 Recyclables must be clean and dry.**
 Food is considered a contaminate. No dirty peanut butter jars or bottles with water still in them. Cardboard must also be clean and dry. Greasy pizza boxes are not recyclable.
- 3 No need to sort or bag your items**
 Place your approved recyclables in your Kimble Recycling Cart all together. Items should be loose and unbagged. Bags are a contaminate at our Recycling Center.

MOGADORE RECYCLING COLLECTION CALENDAR 2021

S M T W R F S	S M T W R F S	S M T W R F S	S M T W R F S	S M T W R F S	S M T W R F S
APRIL 2021	MAY 2021	JUNE 2021	JULY 2021	AUGUST 2021	SEPTEMBER 2021
1 2 3	1	1 2 3 4 5	1 2 3	1 2 3 4 5 6 7	1 2 3 4
4 5 6 7 8 9 10	2 3 4 5 6 7 8	6 7 8 9 10 11 12	4 5 6 7 8 9 10	8 9 10 11 12 13 14	5 6 7 8 9 10 11
11 12 13 14 15 16 17	9 10 11 12 13 14 15	13 14 15 16 17 18 19	11 12 13 14 15 16 17	15 16 17 18 19 20 21	12 13 14 15 16 17 18
18 19 20 21 22 23 24	16 17 18 19 20 21 22	20 21 22 23 24 25 26	18 19 20 21 22 23 24	22 23 24 25 26 27 28	19 20 21 22 23 24 25
25 26 27 28 29 30	23 24 25 26 27 28 29	27 28 29 30	25 26 27 28 29 30 31	29 30 31	26 27 28 29 30
	30 31				
S M T W R F S	S M T W R F S	S M T W R F S	S M T W R F S	S M T W R F S	S M T W R F S
OCTOBER 2021	NOVEMBER 2021	DECEMBER 2021	JANUARY 2022	FEBRUARY 2022	MARCH 2022
1 2	1 2 3 4 5 6	1 2 3 4	1	1 2 3 4 5	1 2 3 4 5
3 4 5 6 7 8 9	7 8 9 10 11 12 13	5 6 7 8 9 10 11	2 3 4 5 6 7 8	6 7 8 9 10 11 12	6 7 8 9 10 11 12
10 11 12 13 14 15 16	14 15 16 17 18 19 20	12 13 14 15 16 17 18	9 10 11 12 13 14 15	13 14 15 16 17 18 19	13 14 15 16 17 18 19
17 18 19 20 21 22 23	21 22 23 24 25 26 27	19 20 21 22 23 24 25	16 17 18 19 20 21 22	20 21 22 23 24 25 26	20 21 22 23 24 25 26
24 25 26 27 28 29 30	28 29 30	26 27 28 29 30 31	23 24 25 26 27 28 29	27 28	27 28 29 30 31
31			30 31		